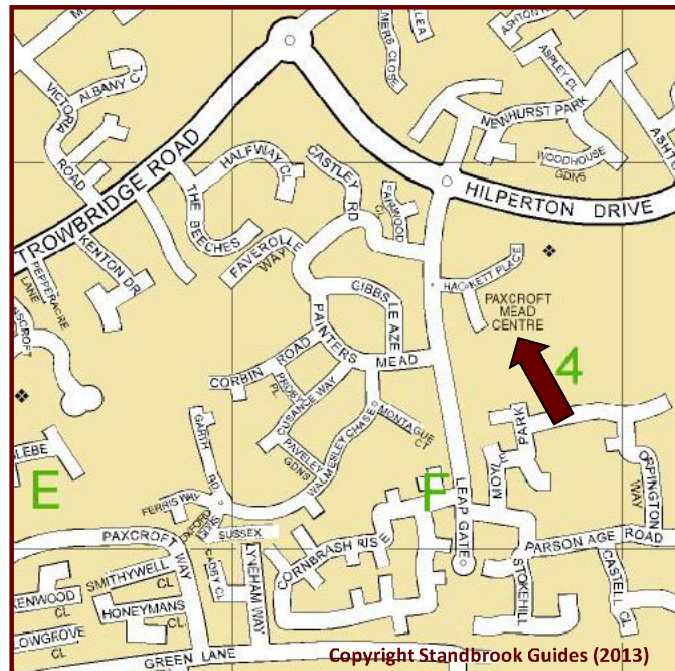


## HIRE RATES 2021 - 2022

Residents & charities	£12.50 per hour
Commercial	£25.00 per hour
<p>NB. Other rates are available to small businesses and regular hirers. Rates are valid from 1st April 2021 to 31st March 2022</p>	
<p>Contact our Booking Officer 01225 808108 or <a href="mailto:bookings@paxcroftmead.org.uk">bookings@paxcroftmead.org.uk</a> Booking forms from our Website or the Centre. You can check availability on line</p>	

## WHERE TO FIND US



[www.paxcroftmead.org.uk](http://www.paxcroftmead.org.uk)

Registered Charity Number 1123423

## PAXCROFT MEAD COMMUNITY CENTRE



Hackett Place  
Paxcroft Mead  
Hilpertons  
Trowbridge  
Wiltshire  
BA14 7GW



**PAXCROFT MEAD COMMUNITY CENTRE** is the busy, friendly, social hub of Paxcroft Mead residential estate.

**This modern, well-maintained Centre** is situated in the District Centre at Hackett Place, adjoining the beautiful Paxcroft Mead Country Park.

**The Centre is run by local volunteers**, entirely independent of any local authority funding.

**A popular venue for clubs and classes** of all kinds, the Community Centre is also home to the mead club.

**Three flexible spaces are available** for private and commercial hire, with low rates for residents.

**Recently refurbished and redecorated**, the Centre has new flooring, clean, bright interiors and a recently updated kitchen.

[www.paxcroftmead.org.uk](http://www.paxcroftmead.org.uk)

Registered Charity Number 1123423

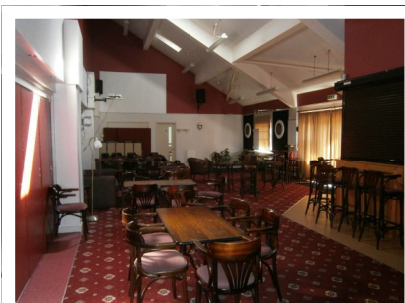
## THREE SPACES AVAILABLE FOR HIRE

**Hall 1 is a large hall** with a hard floor, suitable for all kinds of events and functions. There are tables and chairs to seat up to 120 guests.

**Hall 1 offers a cushioned floor**, making it suitable for a wide range of activities. There are also showers and changing rooms available for sporting activities at no extra charge.



**Hall 1 has a large kitchen** attached with a servery, making it ideal for catering. There is a large supply of mugs (large and small), as well as side and dinner plates. Cutlery can be provided on request.



**Hall 2 is a carpeted bar lounge** with small tables and comfortable informal seating for around 50 guests.

**Hall 2 has a smaller kitchen** with a servery, ideal for smaller catering requirements.

**The mead club bar** in the lounge is available for hire at an extra charge by arrangement with **the mead club**. Hiring of the bar is subject to licensing conditions and availability of staff.

**Please note**, alcoholic beverages may not be brought onto the premises by hirers or guests.

**Portable staging is** also available for hire for events in either hall.

**There is also a conference room** for 10 to 15 delegates according to the seating arrangement. The room is furnished with a meeting table and chairs and the walls are covered with whiteboards, making it ideal for off-site planning and training meetings.

**High speed wireless internet access** is available throughout the building.

## The mead club

**The mead club** is a family club that holds regular events and has a licensed bar for members and their guests at club prices.

**Offering a warm and welcoming atmosphere**, the club has been designed with rich colours, leather furniture and restful mood lighting.



CLUB OPENING HOURS	
Wednesday	Darts (varies)
Thursday	7.30pm - 11.00pm
Friday	7.30pm - 11.00pm
Saturday	7.30pm - 11.00pm
Sunday	Closed

**New members** are welcome and membership applications are invited from local residents.

Individual membership is £5 per annum (January to December) and there is a £2.50 concessionary rate for Senior Citizens.

**Every Thursday**, from 7.30 pm is our regular fun quiz night. Entry is 50p for members and signed in guests.

**For sports fans**, the club has a satellite system to provide wide coverage of international sporting events. The club also participates in a darts league.

**We hold regular live music events** plus other events such as 'race night', 'casino night' and also occasional discos.

## REGULAR USERS OF THE COMMUNITY CENTRE

**Regular user groups** include the **Tuesday Morning Coffee Club** for friendly company.

**For families** there is the **Mead Baby & Toddler Group**, a baby clinic and **Tumble Tots** as well as the **IMPAX Youth Club** for teenagers.

**Sporting and exercise groups** include **Trowbridge Short Mat Bowls Club**, as well as classes in **Karate, Tai Chi, Aerobics, Fitness, Zumba**, and **Pilates**. Details can be found on the website.